

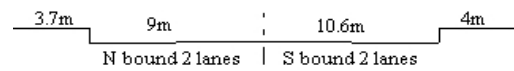
YEAR 2018

CORE STATION 1109

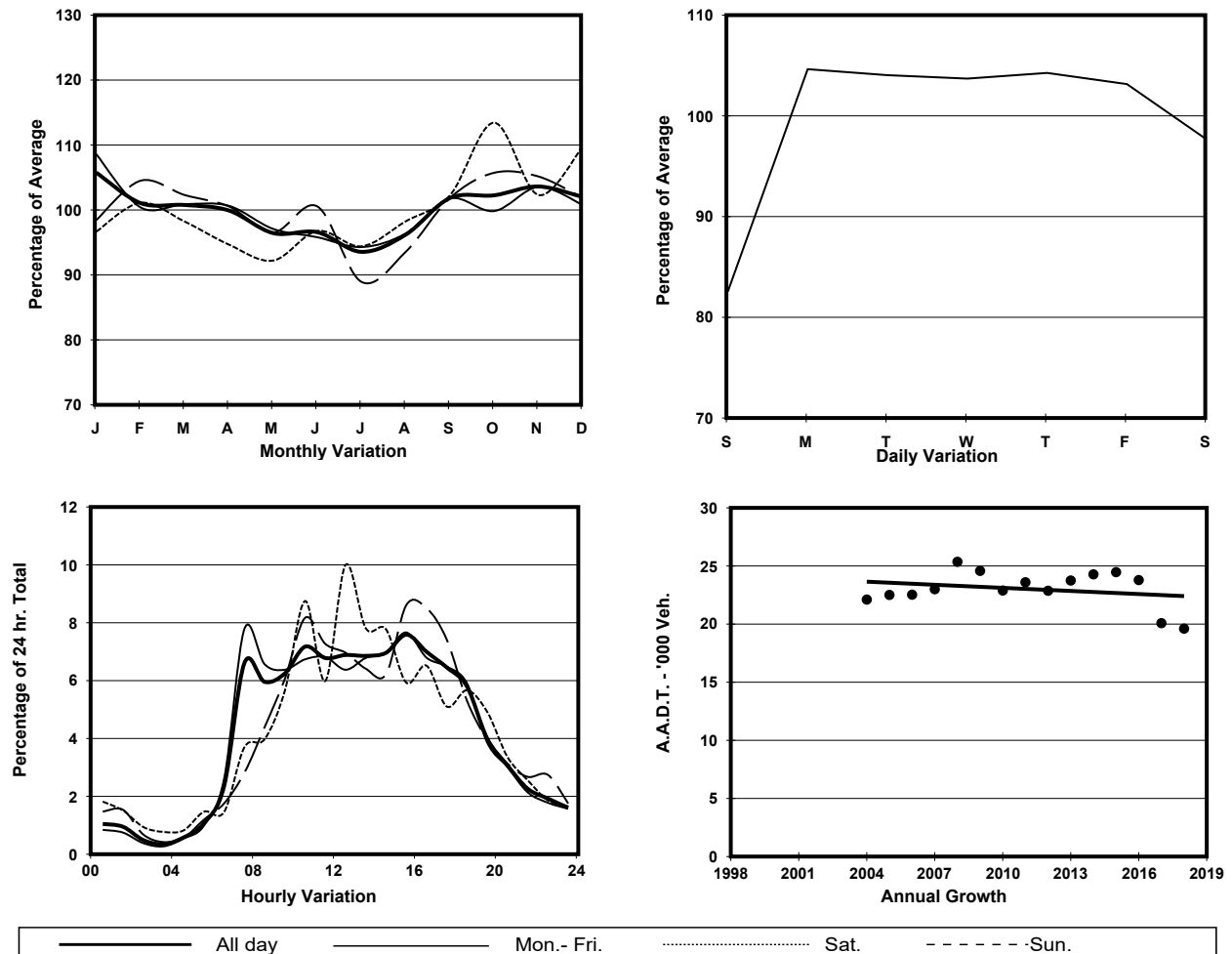
ROAD NETWORK MINOR

ROAD TYPE LOCAL DISTRIBUTOR

LINK OCEAN PARK RD (from WONG CHUK HANG RD to OCEAN PARK)



## 1. TRAFFIC FLOW VARIATION AND GROWTH



## 2. TRAFFIC CHARACTERISTICS (BY DIRECTION)

Parameter	All - Day	Mon. - Fri.	Sat.	Sun.
<b>SOUTH BOUND</b>				
A.A.D.T.	12640	13280	13140	9790
R 12 / 24 - %	80.6	81.7	77.2	77.5
R 16 / 24 - %	91.9	92.4	90.5	90.1
AM Peak Hour	0700-0800	0700-0800	0900-1000	0900-1000
One-way flow at AM peak hour	980	1260	830	600
T - % (AM)	-	-	-	-
PM Peak Hour	1600-1700	1600-1700	1600-1700	1600-1700
One-way flow at PM peak hour	910	910	1290	580
T - % (PM)	-	-	-	-
Prop.of commercial vehicles - 16 hr.	-	-	-	-
<b>NORTH BOUND</b>				
A.A.D.T.	6970	7290	6190	6580
R 12 / 24 - %	79.8	80.4	80.2	75.9
R 16 / 24 - %	90.9	91.3	90.8	88.7
AM Peak Hour	0900-1000	0900-1000	0900-1000	0900-1000
One-way flow at AM peak hour	450	490	350	330
T - % (AM)	-	-	-	-
PM Peak Hour	1700-1800	1700-1800	1700-1800	1700-1800
One-way flow at PM peak hour	530	530	610	490
T - % (PM)	-	-	-	-
Prop.of commercial vehicles - 16 hr.	-	-	-	-

## 3. OTHER INFORMATION AND COMMENT